



SEARCH

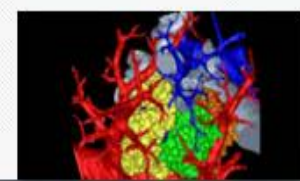
- HOME
- FUNDING
- AWARDS
- DISCOVERIES
- NEWS
- PUBLICATIONS
- STATISTICS
- ABOUT NSF
- FASTLANE



Advancing the Sciences | Funding & Supporting | Inspiring & Edu



VIMS Researchers Unravel Life Cycle of Blue-crab Parasite
October 4, 2012



- REU
- GRFP
- IGERT
- Specialized Information for Graduate Students
- Specialized Information for Undergraduate Students

EVENT CALENDAR



- 15**
OCT Center for Nondestructive Evaluation IAB Meeting
PARTNERSHIP MEETING
- 15**
OCT I/UCRC: Center for Laser and Plasma for Advanced Manufacturing (LPAM) IAB Meeting
PARTNERSHIP MEETING
- 15**
OCT I/UCRC: Center for Tire Research IAB Meeting
PARTNERSHIP MEETING
- 16**
OCT Science: Becoming the Messenger
WORKSHOP
- 17**
OCT Fall 2012: ENG Advisory Committee Meeting
ADVISORY COMMITTEE MEETING

[VIEW ALL EVENTS](#)

[Proposal and Award Policies and Procedures Guide](#)
[Prepare a Proposal](#)
[Upcoming Due Dates](#)
[Submit Proposal to FastLane](#)

Customizable NSF
email service



[FUNDING](#) [AWARDS](#) [DISCOVERIES](#) [NEWS](#) [PUBLICATIONS](#) [STATISTICS](#) [ABOUT NSF](#) [FASTLANE](#)

[Research.gov](#) | [USA.gov](#) | [National Science Board](#) | [Recovery Act](#) | [Budget and Performance](#) | [Annual Financial Report](#)
[Web Policies and Important Links](#) | [Privacy](#) | [FOIA](#) | [NO FEAR Act](#) | [Inspector General](#) | [Webmaster Contact](#) | [Site Map](#)





Graduate Research Fellowship Program

[nsf.gov/grfp](https://www.nsf.gov/grfp)

www.nsfgrfp.org

Gisele Muller-Parker

gtmuller@nsf.gov



GRFP Goals



- ▶ To increase the Nation's human capacity in science and engineering by providing fellowships for **early-career** graduate students who pursue research-based master's and doctoral degrees in NSF-supported disciplines
- ▶ To support the development of a **diverse** and globally engaged US science and engineering workforce



GRFP Key Elements

Five Year Award – \$126,000

- ▶ Three years of support
 - \$30,000 Stipend per year
 - \$12,000 Educational allowance to institution per year
- ▶ International research opportunity: GROW
- ▶ Internship in companies: EIFP
- ▶ Supercomputer access





GRFP Unique Features

- ▶ **Flexible:** choice of project, advisor & program
- ▶ **Unrestrictive:** No service requirement
- ▶ **Portable:** Any accredited U.S. institution
 - MS \longrightarrow PhD
- ▶ **2010 - 2013:** 2,000 new Fellowships each year
 - ~17% success rate



GRFP Solicitation

- ▶ Contains the following information:
 - Program Description
 - Award Information
 - **Eligibility requirements**
 - **Application preparation and submission instructions**
 - **Application Review Information Criteria**
 - Award Administration Information



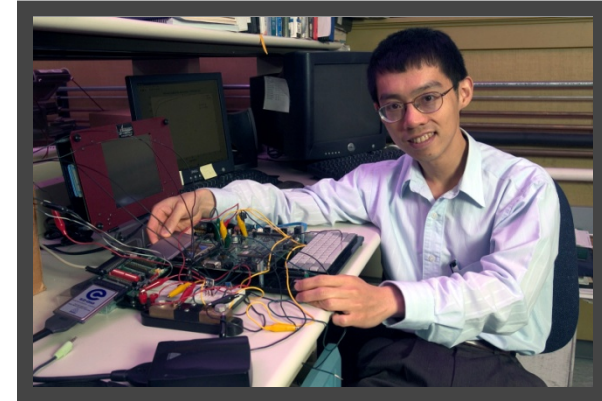
GRFP Eligibility: self-certified

- ▶ U.S. citizens and permanent residents
- ▶ Early-career graduate students
- ▶ Pursuing research-based MS and PhD
- ▶ NSF-supported fields
- ▶ Enrolled in accredited institution in US

Academic Levels

- ▶ **1:** Seniors/baccalaureates; no graduate study
- ▶ **2:** First-year graduate students
- ▶ **3:** Second-year grad students
 - ≤ 12 months of graduate study by August
- ▶ **4:** >12 months graduate study
 - Interruption in graduate study of 2+ years

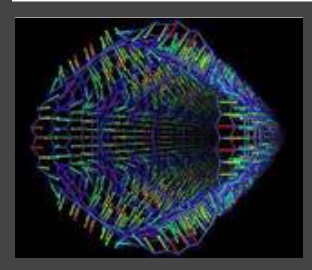
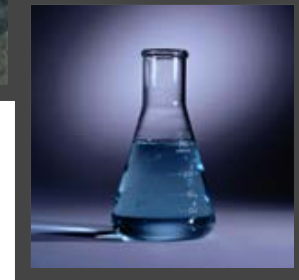
Academic levels evaluated together





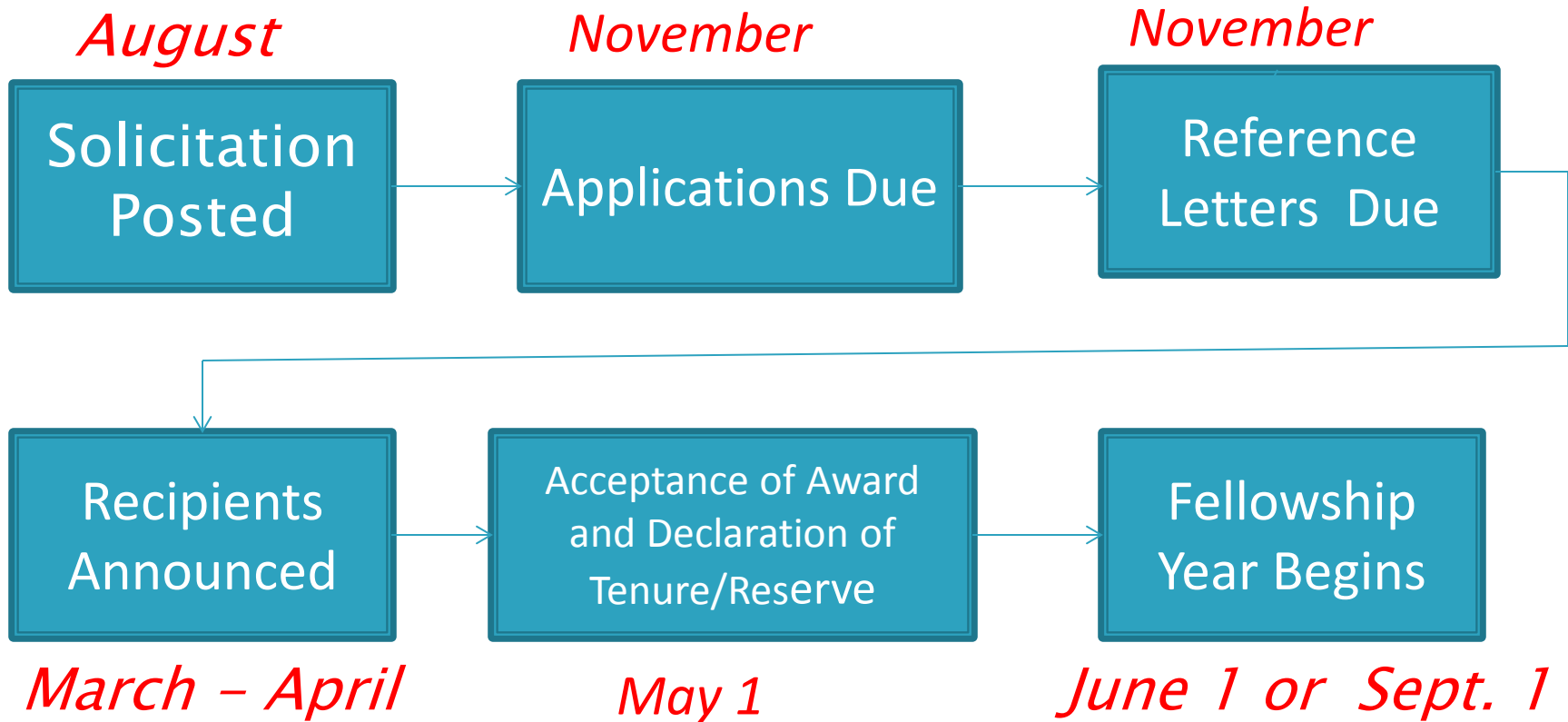
NSF-Supported Fields of Study

- ▶ Chemistry
- ▶ Computer & Information Science/Engineering
- ▶ Engineering
- ▶ Geosciences
- ▶ Life Sciences
- ▶ Materials Research
- ▶ Mathematical Sciences
- ▶ Physics and Astronomy
- ▶ Psychology
- ▶ Social Sciences
- ▶ STEM Education





GRFP Application Timeline





GRFP Complete Application

NSF FastLane

- ▶ Personal statement (2 pages)
- ▶ Previous research experience (2 pages)
- ▶ Proposed plan of research (2 pages)
- ▶ Three letters of reference
- ▶ Transcripts (uploaded electronically)





NSF Review Criteria



National Science Board

GOVERNING BOARD OF THE NATIONAL SCIENCE FOUNDATION & POLICY ADVISORS
TO THE PRESIDENT AND CONGRESS

- ▶ Two National Science Board-approved criteria
 - Intellectual Merit
 - Broader Impacts





Intellectual Merit and Broader impacts

- ▶ **Intellectual Merit:** The Intellectual Merit criterion encompasses the potential to advance knowledge; and
- ▶ **Broader Impacts:** The Broader Impacts criterion encompasses the potential to benefit society and contribute to the achievement of specific, desired societal outcomes.



Elements to be considered in the review

1. What is the potential for the proposed activity to:
 - a. Advance knowledge and understanding within its own field or across different fields (Intellectual Merit); and
 - b. Benefit society or advance desired societal outcomes (Broader Impacts)?
2. To what extent do the proposed activities suggest and explore creative, original, or potentially transformative concepts?
3. Is the plan for carrying out the proposed activities well-reasoned, well-organized, and based on a sound rationale? Does the plan incorporate a mechanism to assess success?
4. How well qualified is the individual, team, or organization to conduct the proposed activities?
5. Are there adequate resources available to the PI (either at the home organization or through collaborations) to carry out the proposed activities?



Intellectual Merit Assessment

- ▶ Academic performance; grades, curricula, etc.
- ▶ Research plan
- ▶ References
- ▶ Research/professional experience

Broader Impacts Assessment

- ▶ Prior accomplishments
- ▶ Future plans
- ▶ Individual experiences
- ▶ Potential benefit to society





GRFP Advice for Applicants

- ▶ Start early
- ▶ Read Solicitation, and read it again
- ▶ Read NSF GRFP websites

- ▶ Select and confirm reference letter writers
- ▶ Pay attention to merit review criteria
- ▶ Share your application materials and the merit review criteria with reference writers



Reference writers

- ▶ Select your reference writers carefully, as they will provide important **information** about your character, and potential as a leader, researcher, and educator
- ▶ You may request up to 5 references
- ▶ It is **your responsibility** to ensure three letters of references are submitted by the published deadline in order for your application to be complete and reviewed



GRFP Reviews

- ▶ Panels of faculty, experts in fields of study
- ▶ Each application has multiple reviewers
- ▶ Merit of each application is assessed based on the potential/promise of the individual applicant
- ▶ **Emphasis on holistic review of the application to determine if the applicant has demonstrated potential for significant achievements in science and engineering research**



GRFP Resources

- ▶ NSF GRFP Website (nsf.gov/grfp)
 - Solicitation and links
- ▶ NSF GRFP FastLane Website (fastlane.nsf.gov/grfp)
 - Application, guides, announcements
- ▶ GRFP Website (nsfgrfp.org)
- ▶ Current & former fellows
- ▶ Phone & e-mail
 - 866-NSF-GRFP (673-4737)
 - info@nsfgrfp.org

